



NICKELODEON

THE NAKED BROTHERS BAND

THE VIDEO GAME



EVERYONE



CONTENT RATED BY
ESRB

PLAY
THQ

⚠ WARNING: PHOTSENSITIVITY/EPILEPSY/SEIZURES

READ BEFORE USING YOUR PLAYSTATION®2 COMPUTER ENTERTAINMENT SYSTEM.

A very small percentage of individuals may experience epileptic seizures or blackouts when exposed to certain light patterns or flashing lights. Exposure to certain patterns or backgrounds on a television screen or when playing video games may trigger epileptic seizures or blackouts in these individuals. These conditions may trigger previously undetected epileptic symptoms or seizures in persons who have no history of prior seizures or epilepsy. If you, or anyone in your family, has an epileptic condition or has had seizures of any kind, consult your physician before playing. IMMEDIATELY DISCONTINUE use and consult your physician before resuming gameplay if you or your child experience any of the following health problems or symptoms:

- dizziness
- altered vision
- eye or muscle twitches
- loss of awareness
- disorientation
- seizures
- any involuntary movement or convulsion

RESUME GAMEPLAY ONLY ON APPROVAL OF YOUR PHYSICIAN.

Use and handling of video games to reduce the likelihood of a seizure

- Use in a well-lit area and keep as far away as possible from the television screen.
 - Avoid large screen televisions. Use the smallest television screen available.
 - Avoid prolonged use of the PlayStation®2 system. Take a 15-minute break during each hour of play.
 - Avoid playing when you are tired or need sleep.
-

Stop using the system immediately if you experience any of the following symptoms: lightheadedness, nausea, or a sensation similar to motion sickness; discomfort or pain in the eyes, ears, hands, arms, or any other part of the body. If the condition persists, consult a doctor.

WARNING TO OWNERS OF PROJECTION TELEVISIONS:

Do not connect your PlayStation®2 system to a projection TV without first consulting the user manual for your projection TV, unless it is of the LCD type. Otherwise, it may permanently damage your TV screen.

HANDLING YOUR PLAYSTATION®2 FORMAT DISC:

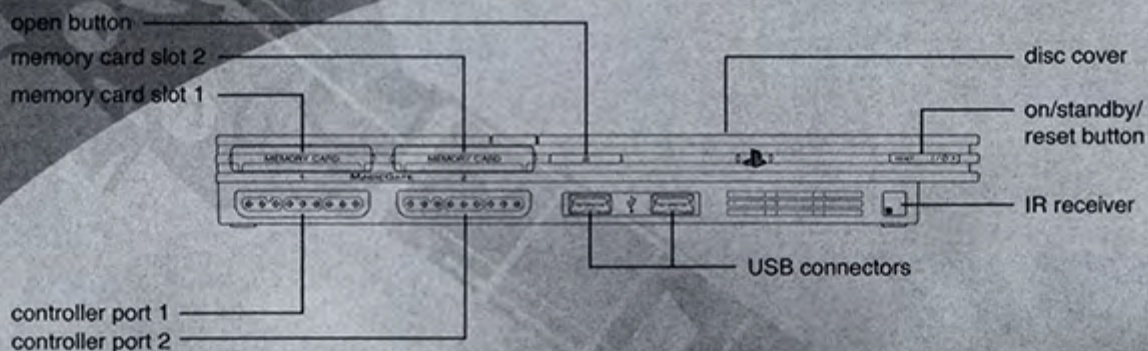
- This disc is intended for use only with PlayStation®2 consoles with the NTSC U/C designation.
- Do not bend it, crush it or submerge it in liquids.
- Do not leave it in direct sunlight or near a radiator or other source of heat.
- Be sure to take an occasional rest break during extended play.
- Keep this compact disc clean. Always hold the disc by the edges and keep it in its protective case when not in use. Clean the disc with a lint-free, soft, dry cloth, wiping in straight lines from center to outer edge. Never use solvents or abrasive cleaners.

Contents

Getting Started	2
Starting Up	3
Introduction	4
Controls	4
Scoring	6
Profile Menu	6
Main Menu	7
Tour	7
Jam Session	7
Party	8
Options	8
Warranty	9



Getting Started



Set up your PlayStation®2 computer entertainment system according to the instructions supplied with your system. Check that the system is turned on (the on/standby indicator is green). Insert the *The Naked Brothers Band* game disc in the system with the label side facing up. Attach game controllers and other peripherals as appropriate. Follow the on-screen instructions and refer to this manual for information on using the software.

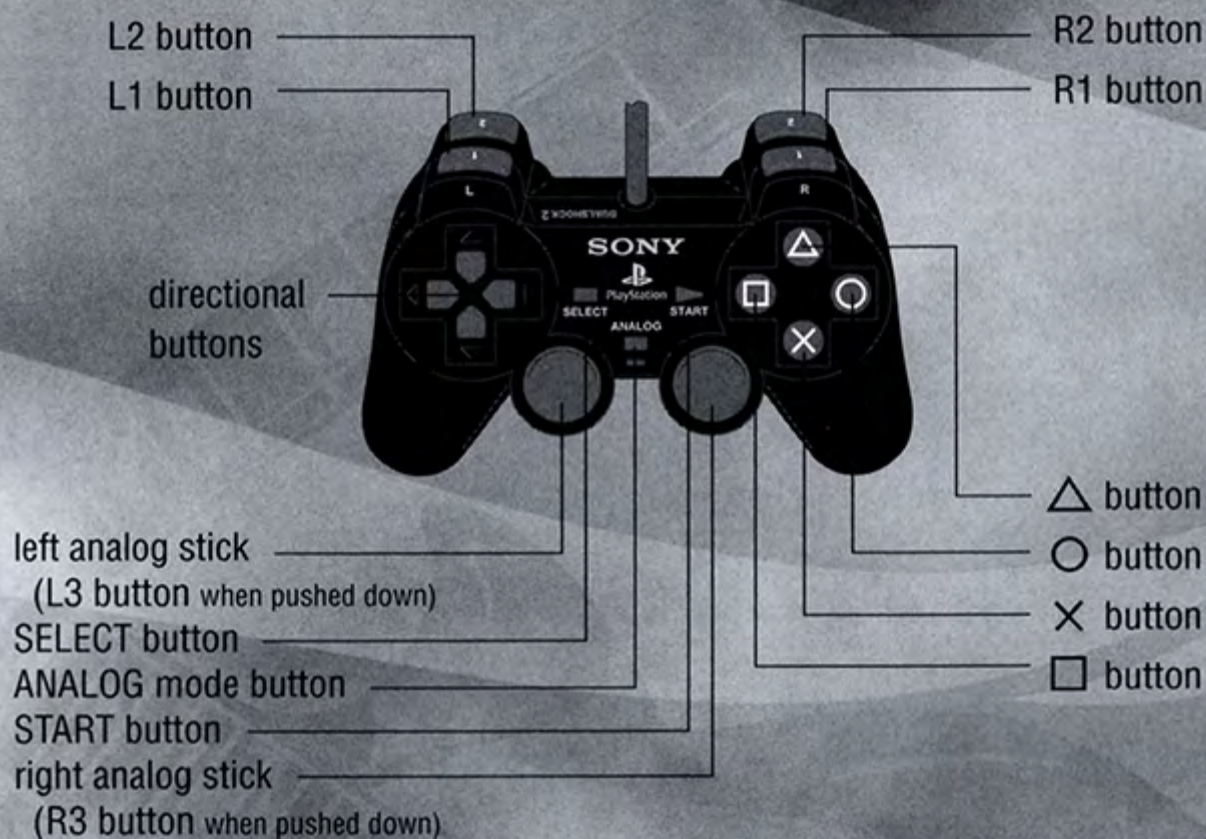
Memory Card (8MB)(for PlayStation®2)

To save game settings and progress, insert a memory card (8MB)(for PlayStation®2) into MEMORY CARD slot 1 of your PlayStation®2 system. You can load saved game data from the same memory card or any memory card (8MB)(for PlayStation®2) containing previously saved games.



Starting Up

DUALSHOCK[®]2 ANALOG CONTROLLER CONFIGURATIONS



Introduction

Rock your way into the *Naked Brothers Band*, an instrumental excitement-filled game where you live the life of a superstar! Here you have the opportunity to play as all the band members of the famous Naked Brothers Band while traveling across the country on tour. You will experience all aspects of being in the band by playing multiple Instruments, singing and even having the ability to change the band's wardrobes ... just like a Rock Star!

Controls



Drums

The left and right analog sticks will be used to hit the drum notes that come in from the left and right hand sides of the game board area. Any direction on the left or right analog stick from center will register a hit.

There are 2 different colors of notes, green notes and purple notes. Green notes require only the left or right analog stick; and purple notes require the L1/L2 or R1/R2 button to be pressed while nudging the analog controls. For the left notes either the L1 or L2 button will work and the R1 or R2 button will activate the purple notes on the right. Long strings of notes will also appear - they represent rolls. A roll can be activated and filled by moving the left and/or right analog stick in any direction repeatedly while it crosses the beat zone.



Guitar / Cello / Bass

The left analog stick will select the strings along a vertical section and the right analog stick is used to strum or pluck notes that enter the strike zone. There are 5 strings to choose from. Holding top, middle or bottom will select the inner 3 strings while the L1 or L2 button will need to be pressed while holding up or down to select the very top and bottom strings.



Notes will flow from the right side of the screen to the strike zone which is located towards the left side on the game board. As with the drum mode, there are alternate note types which will require either the R1 or R2 button to be pressed while the right analog stick is being actuated.





Keyboard

Notes flow from the top of the game board to the strike zones at the bottom. The play space is divided into left and right sections that are made up of 3 keys each. The left and right analog sticks select the keys within each region respectively. Hold left to highlight

the left keys, leave them at neutral to select the middle and hold right to select the right. As the notes center over the strike zone the L1/L2 and R1/R2 buttons will strike the notes. Either the L1/L2 and R1/R2 buttons will activate the hits.



Vocals: Controller Mode

Vocal mode has 5 tracks that may be selected by moving the microphone icon with the left analog stick. The inner 3 tracks are targeted by holding the left analog stick between the up, middle, and down

positions. The outer tracks are selected by holding the L1 button while nudging the left analog stick. When green bars pass under the microphone, press the X button to hit the notes, and when purple bars pass under the icon, press the circle button. The more accurate your hits, the better your score will be.



Vocals: Microphone Mode

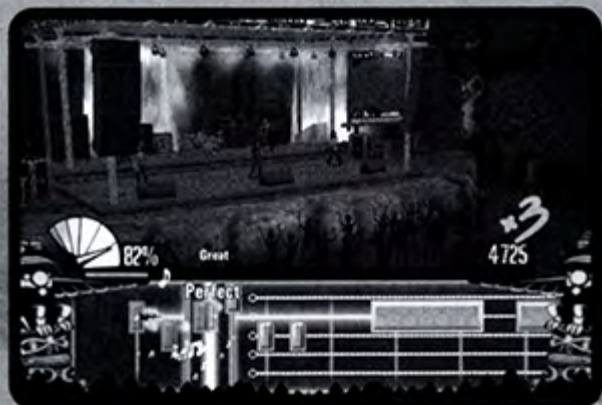
Sing along with your favorite Naked Brothers Band songs karaoke style. As you progress through the song, green bars will display above the lyrics. These bars have pitch and timing guides to help you sing

through the song. The higher the bars are, the higher pitch your voice should be. Lower bars indicate to sing with a lower tone. The lengths of these bars show the timing of the words and for how long to sing. When you sing into the microphone, dots will appear around the green indicators. Dots above mean you are singing too high and below means you are too low. The better you do, the more closely the dots will appear around the indicators. Sometimes the bars will begin with the text "freestyle". For these bars you can sing whatever lyrics and notes that you want!



Scoring

Each of the instrument game modes has indicators that show when the game has detected motion from the controller. Colored glows around the beat zones will tell you how accurate your hit was. Notes can be missed or hit with a good, great, or perfect. Misses will cause the beat zones to light up red, good hits yellow, great, yellow-green and green for perfect hits. There is a multiplier for each mode as well.



A Results screen will appear after your performance detailing your "Hit Percentage" and "Overall Score".

Profile Menu

From the Title screen you will be taken to the Profile Menu. Each profile can track a player's progress through tour mode; there are 4 profile slots available. When the game is first run a profile must be created to continue into the game.



Creating a Profile

To create a profile select one of the slots titled "New Game". Choose an icon from the presented list and select. The icon will be assigned to the profile and you may select that profile to continue into the game.

Using a Profile

Simply click on the profile slot that has an assigned icon to enter the game with that profile data.

Deleting a Profile

Highlight the profile and press the square button. A confirmation popup will display asking if you really want to delete the profile. Click yes to delete or no to cancel.

Main Menu

Once a Profile is created you will be taken to the Main Menu where the following options are available:

Tour

Take the Naked Brothers Band on a world tour where they visit 20 concert venues across 5 cities.

Starting in Seattle, players will be required to play a certain character in each venue using a pre-determined song. Once each venue has been played they must then play a multi-song concert at a venue of their choosing. Once the concert has been won they may play more concerts or single songs in the city or continue on to the next city. The cities are ordered Seattle, New Orleans, Miami, New York, and finally Los Angeles.

Throughout the tour, bonus songs, new instrument visuals, and character outfits can be unlocked. Everything that is unlocked can be used in the Jam Sessions and Party modes.

When you choose to play an instrument for the first time, the default option is to play through an interactive tutorial that shows you how to play. Afterwards, tutorials can be accessed at any time from the venue setup screen as "Setup a tutorial".

Jam Session

In Jam Session you are free to play as any Naked Brothers Band member with any of the songs, cities and venues, or instrument styles you have unlocked on your tour.



Party

With party mode you and a friend may play cooperatively or competitively. Content that has been unlocked in Tour mode is available to use in Party mode. In both multiplayer modes the 1st player will be on the top of the screen while the 2nd player will be on the bottom.

Cooperative

Each player must choose a different character to play. The final score will be a combination of both players' performance.

Versus

Player 1 handles the character, venue, instrument, and song selection. Both players will play the same song and instrument competing for the better score.

Options

- Music Volume** Controls the volume of music during game play
- Effects Volume** Controls the volume of non-music effects like crowd noise and interface elements
- Credits** View the credits of the game



Warranty and Service Information

In the unlikely event of a problem with your product ("Product"), you may only need simple instructions to correct the problem. Please contact the THQ Inc. ("THQ") Customer Service Department at (818) 880-0456 or on the web at <http://www.thq.com> before returning the Product to a retailer. Live Customer Service Representatives are available to help you Monday through Friday 9am to 5pm PST or you can use our automated systems by phone or on the web 24 hours a day, 7 days a week. Please do not send any Product to THQ without contacting us first. Your 5 digit **Product Code is 46170**. Please use this code to identify your Product when contacting us.

Limited Warranty

THQ warrants to the best of THQ's ability to the original consumer purchaser of the Product that the medium on which the Product is recorded shall be free from defects in materials and workmanship for a period of ninety (90) days from the original date of purchase. The Product is sold "as is," without express or implied warranty of any kind, and THQ is not responsible for any losses or damages of any kind resulting from use of this Product. If a defect occurs during this ninety (90) day warranty period, THQ will either repair or replace, at THQ's option, the Product free of charge. In the event that the Product is no longer available, THQ may, in its sole discretion, replace the Product with a Product of comparable value. The original purchaser is entitled to this warranty only if the date of purchase is registered at point of sale or the consumer can demonstrate, to THQ's satisfaction, that the product was purchased within the last ninety (90) days.

To receive warranty service:

Notify the THQ Customer Service Department of the problem requiring warranty service by calling (818) 880-0456 or on the web at <http://www.thq.com>. If the THQ service technician is unable to solve the problem by phone or on the web via e-mail, he will authorize you to return the Product, at your risk of damage, freight and insurance prepaid by you, together with your dated sales slip or similar proof-of-purchase within the ninety (90) day warranty period to:

THQ Inc.
Customer Service Department
29903 Agoura Road
Agoura Hills, CA 91301

THQ is not responsible for unauthorized returns of Product and reserves the right to send such unauthorized returns back to customers.

This warranty shall not be applicable and shall be void if: (a) the defect in the Product has arisen through abuse, unreasonable use, mistreatment or neglect; (b) the Product is used with products not sold or licensed by Sony Computer Entertainment America or THQ (including but not limited to, non-licensed game enhancement and copier devices, adapters and power supplies); (c) the Product is used for commercial purposes (including rental); (d) the Product is modified or tampered with; (e) the Product's serial number has been altered, defaced or removed.

Repairs after Expiration of Warranty

After the ninety (90) day warranty period, defective Product may be replaced in the United States and Canada for US\$20.00. The original purchaser is entitled to the replacement of defective Product for a fee, only if proof of purchase is provided to THQ. Make checks payable to THQ Inc. and return the product along with the original proof of purchase to the address listed above.

Warranty Limitations

THIS WARRANTY IS IN LIEU OF ALL OTHER WARRANTIES AND REPRESENTATIONS. NO OTHER WARRANTIES OR REPRESENTATIONS OR CLAIMS OF ANY NATURE SHALL BE BINDING ON OR OBLIGATE THQ. ANY APPLICABLE IMPLIED WARRANTIES OR REPRESENTATIONS, INCLUDING WARRANTIES OF MERCHANTABILITY AND FITNESS FOR A PARTICULAR PURPOSE ARE HEREBY LIMITED TO NINETY (90) DAYS FROM THE DATE OF PURCHASE AND ARE SUBJECT TO THE CONDITIONS SET FORTH HEREIN. IN NO EVENT SHALL THQ BE LIABLE FOR CONSEQUENTIAL OR INCIDENTAL DAMAGES RESULTING FROM THE BREACH OF ANY EXPRESS OR IMPLIED WARRANTIES.

The provisions of this warranty are valid in the United States only. Some states do not allow limitations on how long an implied warranty lasts or exclusion of consequential or incidental damages, so the above limitations and exclusions may not apply to you. This warranty gives you specific legal rights, and you may also have other rights, which may vary, from state to state.

Warning

Copying of this Product or any of its contents or elements is illegal and is prohibited by United States and international copyright laws. Back-up or archival copies of this Product or any of its contents or elements are not authorized and are not necessary to protect your Product. United States and international copyright laws also protect this manual and other printed matter accompanying this Product. Violators will be prosecuted.



Game and Software © 2008 THQ Inc. © 2008 Viacom International Inc. All Rights Reserved. Nickelodeon, The Naked Brothers Band and all related titles, logos, and characters are trademarks of Viacom International Inc. Developed by Barking Lizards Technologies, LLC. Exclusively published by THQ Inc. Uses Bink Video. Copyright © 1997-2008 by RAD Game Tools, Inc. Barking Lizards and its logo are trademarks and/or registered trademarks of Barking Lizards Technologies, LLC. THQ, PlayTHQ, Rock University and their respective logos are trademarks and/or registered trademarks of THQ Inc. All rights reserved. All other trademarks, logos and copyrights are property of their respective owners.



JAM TO THE SLAMMIN' SEASON 2!



NEW TO DVD
OCTOBER 21ST

2-DISC SET INCLUDES
OVER 5 HOURS OF
ROCKIN' EPISODES,
MUSIC VIDEOS
& MORE!

nakedbrothersbanddvd.com

© 2008 Viacom International Inc. All Rights Reserved.

TM, ® & Copyright © 2008 by Paramount Pictures. All Rights Reserved.

NICKELODEON